

## Stage 1B Rehabilitation & Environmental Offsets Plan - Gunbarrel lift camera and trench

This plan relates to the *Rehabilitation and Environmental Offsets Plan, Stage 1B Mountain Bike Trails, Thredbo DA 6571, December 2015*, and has been prepared to detail the rehabilitation and monitoring required for the areas disturbed by the construction works associated with the installation of a camera and cable trench within the Stage 1B offset area within the Gunbarrel lift corridor.

### Background

The proposed camera cable trench which forms part of the Merritts Intermediate Mountain Bike Trail and Associated Works development traverses a short section of the approved Stage 1B offset area, refer **Figure 1**. The trench disturbance is approximately 30 m<sup>2</sup> (100 m long x 300 mm wide).



Figure 1: Proposed camera trench (yellow line) within Stage 1B offset area

## Rehabilitation Works

Following installation of the cable, the trench alignment will be rehabilitated and stabilised as per the following methods:

Timing	Procedure	Methods
Post Construction	Direct seeding	<ul style="list-style-type: none"> <li>As this area is dominated by NATIVE species, use only 100% native <i>Poa</i> endemic to the area</li> <li>Seeding rate: Slope grade &lt;40% use 15-20g/m<sup>2</sup> Slope grade &gt;40% use 20-30g/m<sup>2</sup></li> <li>Broadcast Dynamic Lifter @ 100g/m<sup>2</sup></li> <li>Weed free rice straw mulch and jute mesh to be applied over seed to protect soil and provide a favourable environment for establishment</li> </ul>
	Sod replacement	<ul style="list-style-type: none"> <li>Utilise sod replacement in disturbed areas where possible in accordance with "Rehabilitation Guidelines for the Resort Areas of KNP" – Section C.1.4</li> </ul>
	Stabilise disturbed areas (batters/embankments and trail to be closed)	<ul style="list-style-type: none"> <li>Spread weed free rice straw on slope grades &lt;40% @ 1 bale per 25m<sup>2</sup> and weigh down using native thatch / litter gained from works. Jute mesh may be used if thatch amount insufficient</li> <li>Install Jute mesh (or similar) over straw on batters &amp; embankments &gt;500mm height &amp; with a slope &gt;40% (Grade% = Rise/Run x 100)</li> <li>Direct seed at rates listed above to stabilise disturbed areas including batters, embankments and trench</li> </ul>
	Planting native tube stock	<ul style="list-style-type: none"> <li>Plant native tube stock along trench and any areas disturbed as a result of the construction works</li> <li>Plant shrubs at 3/m<sup>2</sup></li> <li>Plant grasses and forbs at 5/m<sup>2</sup></li> <li>Refer to species list for suitable rehabilitation species</li> <li>Water crystals &amp; organic fertiliser may be used at label rates</li> <li><i>Water crystals</i>: 5gm pre-hydrated crystals, crystals must be hydrated for at least 2hrs prior to planting</li> <li><i>Fertiliser</i>: 1 x Typhoon Native fertiliser tablet per plant (<i>Poa</i> &amp; shrubs) placed next to or below roots</li> </ul>
	Watering	<ul style="list-style-type: none"> <li>If required, water rehabilitation areas to assist in seed germination, tubestock establishment and straw retention</li> </ul>

	Weed control	<ul style="list-style-type: none"> <li>• Monitor all areas disturbed by the works (including areas adjacent to the works) for signs of weed infestation</li> <li>• Treat weeds with methods appropriate to weed species being treated including low pressure spot spraying and hand removal techniques</li> <li>• Limit off-target damage by only spraying in the appropriate conditions</li> <li>• Weed monitoring &amp; control is to be conducted on an on-going basis and included in annual resort weed control activities</li> </ul>
--	--------------	--

## Species List

The following species have been selected from the Gunbarrel offset area species list for planting in areas disturbed by the construction works:

- *Coronidium scorpioides* (Button Everlasting)
- *Acaena novae-zelandiae* (Bidgee-widgee)
- *Olearia phlogopappa* (Dusty Daisy Bush)
- *Olearia megalophylla* (Large Leaf Daisy Bush)
- *Ozothamnus secundiflorus* (Cascade Everlasting)
- *Poa fawcettiae* (Smooth Blue Snowgrass)

## Monitoring Requirements

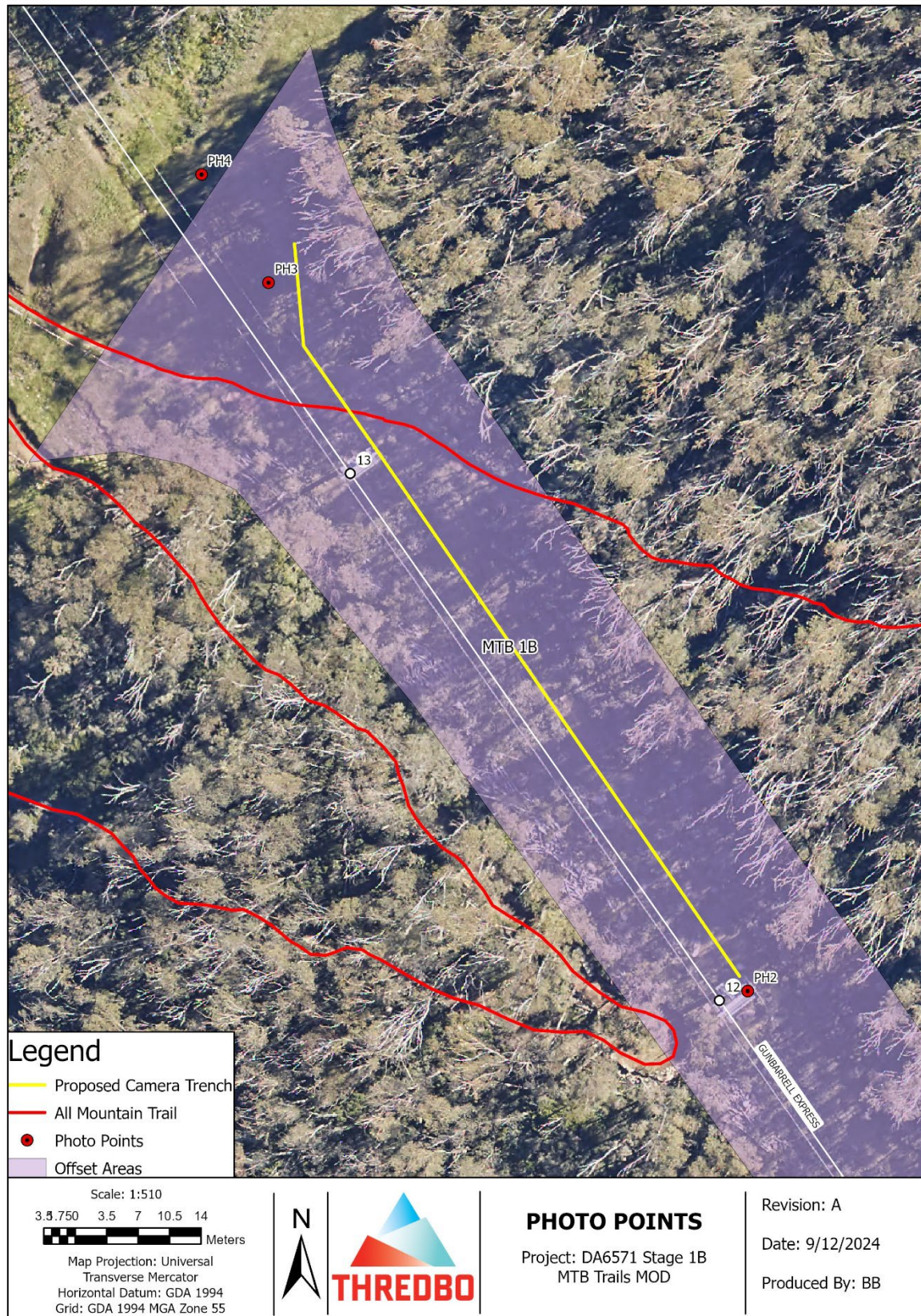
Up until a minimum period of five (5) years from the date after construction completion of the camera cable trench, the disturbed area will be monitored and necessary action undertaken to ensure that:

- a) the ground remains erosion resistant, and the groundcover is being established;
- b) all areas planted with native species are surviving, where replacement plantings will otherwise be carried out at least once within every twelve (12) month period within the five (5) year period until successful site establishment in accordance with the approved revegetation requirements.

The monitoring will be consistent with the requirements for the Gunbarrel Lift Line Offset Area as per the *Rehabilitation and Environmental Offsets Plan, Stage 1B Mountain Bike Trails, Thredbo DA 6571, December 2015* and will be carried out after winter each year.



## Monitoring Points Map











## Photo Points

Photo Point	Description	Coordinates	Photo
GBU PHPT4  Date: 10/09/24	Looking at trenching site from Dream Run	616,876 5,960,551	
GBU PHPT3  Date: 10/09/24	Looking down Gunbarrel lift line to T12 along trenching site	616,883 5,960,539	
GBU PHPT2  Date: 10/09/24	Looking up Gunbarrel lift line from T12 along trenching site	616,937 5,960,460	